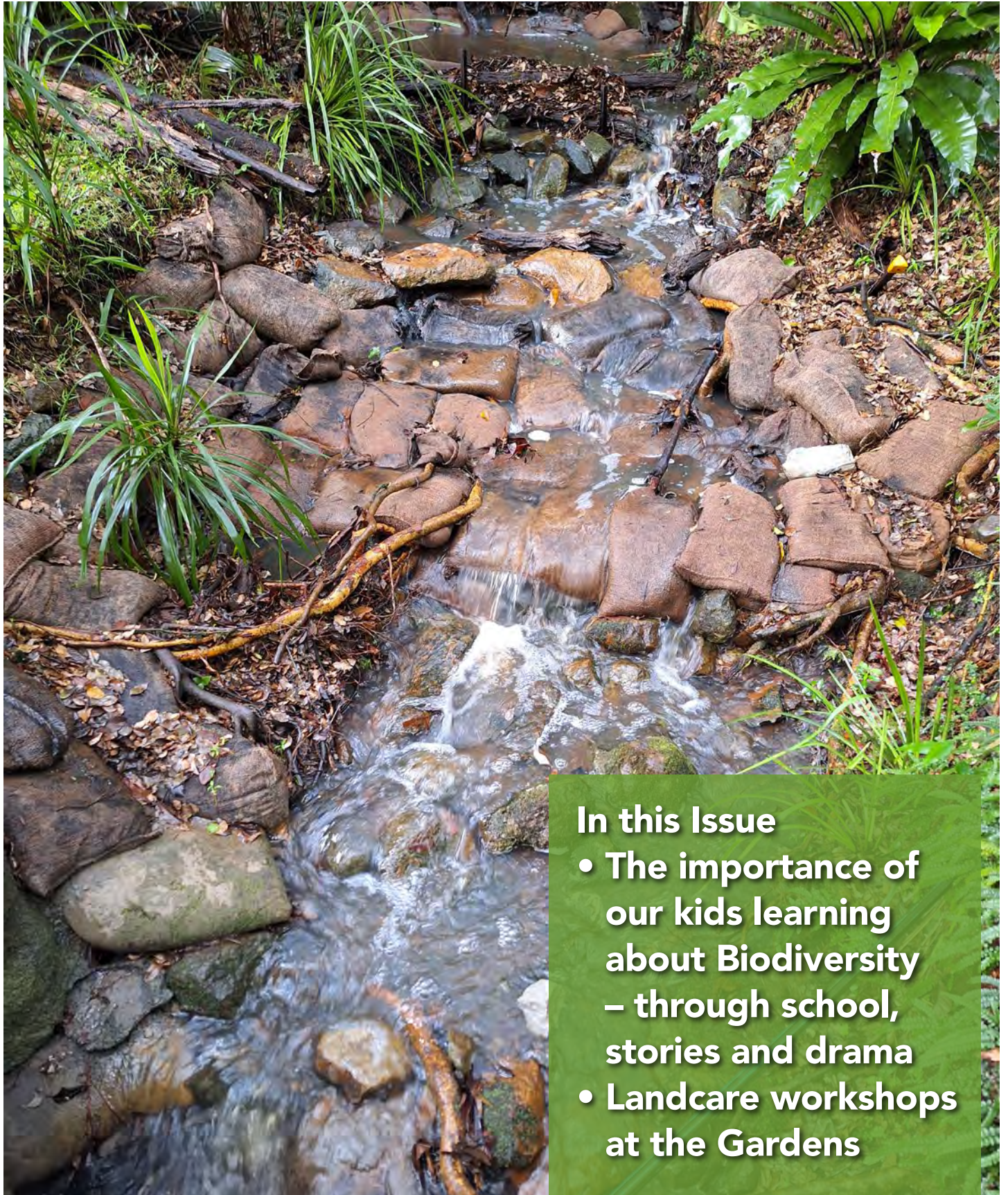

GARDENS GAZETTE

February 2024

Newsletter for Friends of the Lismore Rainforest Botanic Gardens Inc



In this Issue

- **The importance of our kids learning about Biodiversity – through school, stories and drama**
- **Landcare workshops at the Gardens**

MEET THE FLRBG COMMITTEE

Executive

President – Tracey Whitby

president@friendslrbg.com.au

Vice President – Hazel Bridgett

Secretary/Treasurer –

Florence Treverrow

secretary@friendslrbg.com.au

Committee

Workday Organiser – Ros Little

Curator – Peter Gould

Nursery Manager – Jenny Wilson

Member & Newsletter Editor –

Marie Matthews – 0428 895261

Contact Information

For General Information call:

0450 596 705

Find us on the web at –

friendslrbg.com.au

Find us on Facebook:

facebook.com/FLRBG

Friends of Lismore Rainforest

Botanic Gardens

PO Box 1327

LISMORE NSW 2480

Cover photo: Creek side

Photo: Tracey Whitby

NEW EDITION FLRBG GREETING CARDS FOR SALE!

ONLY \$20 A SET OF 12!

12 beautiful full colour cards featuring new photos, taken by the Friends of Lismore Rainforest Botanic Gardens, of local plants and animals. Cards have been left blank for to write your own message. Our card set makes a perfect and thoughtful gift too!

To purchase a set, send an email: publicity@friendslrbg.com.au

Card 1: *Syzygium moorei* Coolamon Photo: Florence Treverrow

Card 2: *Mischarytera lautereriana* Corduroy Tamarind Photo: Florence Treverrow

Card 3: Red-Headed Honeyeater *Myzomela erythrocephala* Photo: Phil Jarman



ACKNOWLEDGEMENTS

We would like to acknowledge those who are supporting us financially and/or with their knowledge, skills and experience.

Andrew and Jeni Binns,
Janelle Saffin,
Jenny Dowell,
Mavourneen Kennedy,
Southern Cross Uni,
Waste Facility staff,
Paul Boxsell LCC Sign Shop,
Ginger Blue Graphic Design,
Fair Dinkum Constructions,
Interactive Landscapes

Bruce Jobson Plumbing,
Limpinwood Gardens Nursery,
RBG at Mt Annan,
Ben De Nardi Paper Plans,
Firewheel Nursery,
Burringbar Rainforest Nursery,
Hugh & Nan Nicholson,
Accurate Tree Solutions,
Wild Dog Dingo Services,
Richmond Sand, Gravel &
Landscaping,
Don Granatelli Architect,
Peter Lucena Engineer,
Lismore Garden Centre,

Newton Denny Chapelle
Surveyors,
Lismore City Printery,
Suvira McDonald,
Geoff McGrath Landscaping,
Golden Grove Naturals,
L J Hooker Alstonville
Peter Gow Electrical
Susan Oliver Graphic Design
and all who have supported us in
any way including some who have
requested to remain anonymous.
We couldn't do it without you –
THANK YOU!

PRESIDENT'S MESSAGE

2023 saw a concerted effort by the Friends to maintain our beautiful Botanic Gardens. The plants were thriving after the summer, autumn and winter of plentiful rain. Spring in 2023, however, was very dry and watering became a priority during September and October. A wetter than forecast summer has been a wonderful surprise.

Major projects for 2024 include irrigation for the Gardens and an increase in power to the site. The Lismore City Council is aware of these plans and will be continuing their support as we apply for grants to complete these urgent projects. Donations are also welcome, so please help us by assisting in any way you can. The bridge between Rooms 5 and 6 is under construction and a new, large equipment shed has DA approval and is also awaiting funding.

Thanks to **Hazel Bridgett** and her numerous grant applications in 2023, as well as generous donations and hours of volunteer time, particularly by **Will Evans**, we have been able to complete the bridge at the top of the Rainforest Walk. NSW flood recovery grants have enabled the concreting of the road into carpark 2 and the restoration of the Sensory Garden.

The weeding and maintenance program is now vital in maintaining the Gardens and keeping the public safe. We have benefitted from a new evacuation, fire and first aid protocol, put into action by LCC and discussed during more regular liaison meetings with the managers of the waste facility.

Guided walks have taken place on the last weekend of every month in 2023, thanks to a dedicated team of guides.

Despite fewer visits from school groups in '23, we did host a *World Environment Day* for primary students, organised by the Waste Facility, and a STEM (Science Technology Engineering and Maths) excursion for over ninety Year 1 and 2 students in October, organised by the Dept of Education NSW coordinators and the waste facility educators.

We participated in *Big Scrub Day* by offering plant sales and four guided walks on November 26th. The Visitor's Centre has a new set of catering cupboards made by **Don Woodley**, our woodworker and there is a greater volunteer presence on Wednesday mornings. The office is being updated and organised to improve its use by the Friends.

Roundabout Theatre has received funding for its 'Understory' drama project which is now scheduled for April 2024. This interactive experience for young people, focussing on communication between plants, will take place in the *Hoop Pine Forest* and *Wilson's Park Species Garden* and will be available to the public, as well as school audiences.

My thanks to Vice President, **Hazel Bridgett**, for her support this year as our ever-present photographer and Facebook poster, and to the other wonderful committee



Top: Our new catering cupboard with Don Woodley waiting for his cuppa!
Keen volunteers, Dave Tims (L) and Don (R) repairing the Cool Cubby

members who quietly and patiently make a huge contribution to the management of the Gardens. **Marie**, who updates our notice boards and edits brochures and newsletters; **Ros**, running every Wednesday work day and co-ordinating the delivery of supplies; **Jenny**, keeping the nursery plants thriving and encouraging her team; **Peter**, guiding walks, curating our plants, monitoring the scientific studies and organising our database; and **Florence**, managing our funds and email, as well as helping regularly in the nursery.

We have lots of positive feedback about our new-look newsletter. Please feel free to contribute to our next one which may come before August as we try to publish more regularly through out the year. Your input, articles and photography, is always welcome.

We are very grateful for the energy and commitment of the wonderful group of volunteers who so willingly contribute with their many and varied skills. We'd love to have many more, so please consider joining us on Wednesday mornings.

Tracey Whitby
publicity@friendslrbg.com.au
FLRBG February 2024



...It was a **joy** to see the students so **engaged** in the production and the learning, one child on the bus home declared; 'It was the **best** day of my **life**'.

Students enjoying the run-through performance of the production 'Understory' in the Hoop Pine Forest. Photo: Roundabout Theatre

LOCAL YOUNGSTERS LEARNING ABOUT BIODIVERSITY

Understory is a new immersive kids show to be premiered in the Hoop Pine Forest at the Gardens in the April school holidays.

An immersive theatre adventure for kids aged 7-12, the show is part theatre, part quest and part wacky science field trip, made to inspire in children a deep curiosity, wonder and connection to the natural world.

The whole of the Hoop Pine Forest will be magically augmented into an enchanting theatrical world through an original story that is both fantastical and based in real science and deep ecology principles.

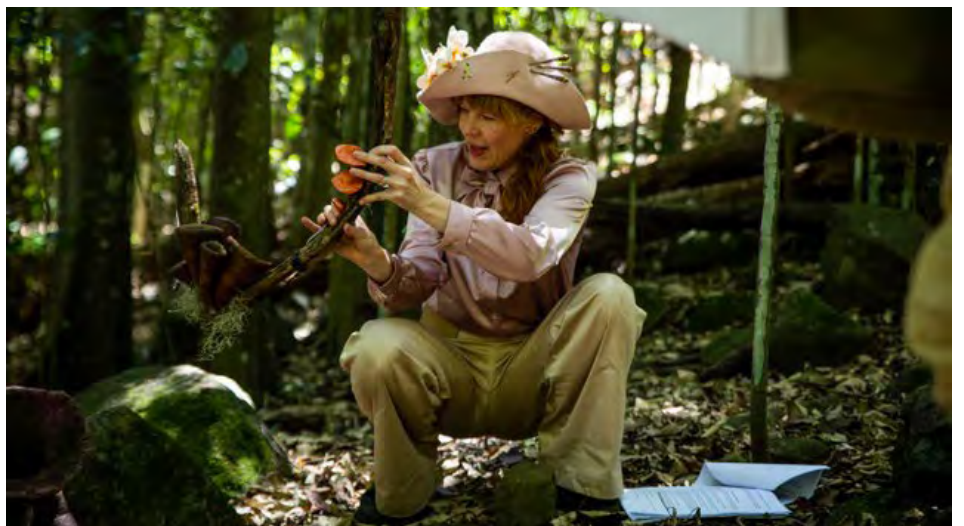
Accompanied by two Wonderer characters, and guided by the forest's 'Kindoms', the audience will encounter: magical portals, mycelium network communication stations, whispering trees, singing nests, ancient rocks and multiple camouflaged puzzles and riddles, as they embark on an important mission to find the lost *Twins of Mirth*, the *Seed Star* and to save the forest from disarray.

Lismore Rainforest Botanical Gardens (LRBG) has been the perfect place to trial this ambitious project and realise a new format of theatre that is highly visceral and participatory.

The gardens are a local treasure and we feel incredibly honoured to be able to work in this inviting and creatively designed wild space. We have done several creative developments at the site over the last 2 years with many artists, educators and kids and really appreciate the generous support and encouragement we have been given by the **Friends of LRBG** and the Lismore City Council.

Each show has a maximum of 30 people, so we highly encourage people to **book tickets early**. **Tickets go on sale mid-March** and details on how to buy them will be posted on the Roundabout Theatre website: roundabout.net.au and facebook page: facebook.com/roundabouttheatre/

Understory is supported by the NSW Government through CREATE NSW. The creative development of Understory was also supported by NORPA and Arts Northern Rivers.



'Understory was a truly magical and engaging experience for the students. So special for them to be outdoors, learning about nature, science, life cycles, in such a creative way, getting them to work together and problem solve. I have never seen anything like it before and we were truly blown away by how unique and special it was. I would thoroughly recommend the show to any primary class.'

Charlotte Pritchard, Year 3 teacher The Living School

BARKERS VALE PUBLIC SCHOOL PROJECT - GABUL GROUP (YEARS 3 TO 6)

Our Animal Habitat Learning Garden

Barkers Vale now has a beautiful native garden and a permanent biodiversity display resulting from hours of work by the students in Semester 2 2023.

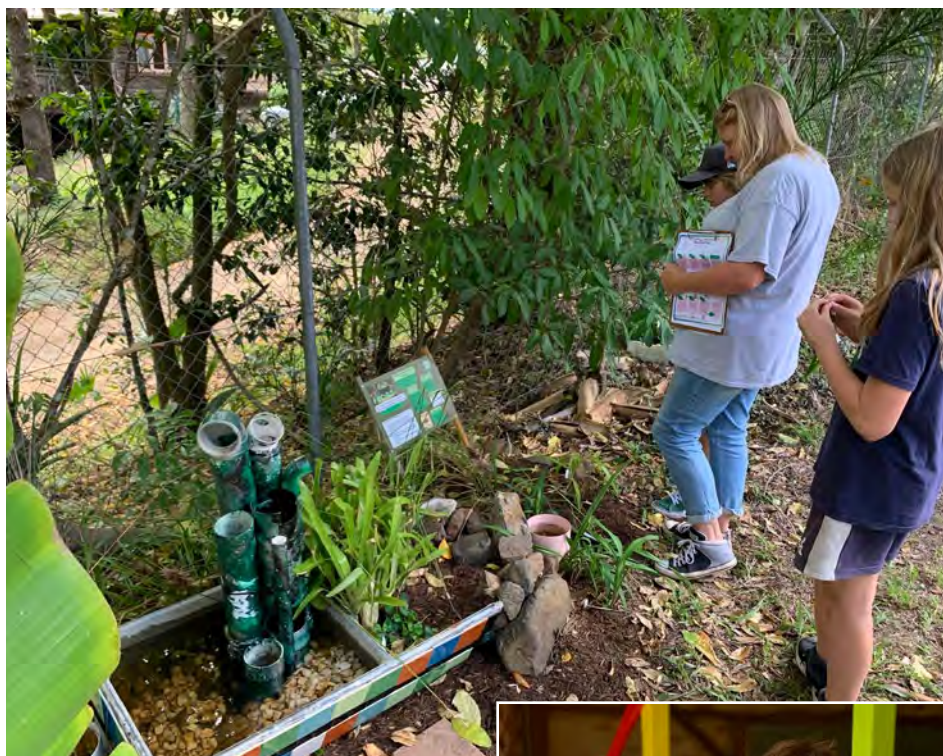
The project's driving question was: *How can we as environmentalists acquire knowledge about our school's biodiversity, to subsequently develop and share sustainable practices to increase the biodiversity in our school grounds, with the local community?*

After an excursion to the Lismore Rainforest Botanic Gardens, where students took photos and noted the various ways everyone can increase biodiversity and sustainability into their own gardens, the students completed a project to improve their school gardens. They purchased plants from the nursery and visited the *Revolve Shop* at the *Lismore Waste Facility* to find any item suitable for butterfly ponds, bird baths and frog houses.

Students collected data about existing native fauna, by placing wildlife cameras in school grounds, experimented with using natural bait to capture wildlife on camera and gathered, examined and analysed scats. A list of currently present species, a plan how to maintain the habitat of these species and attract more were developed.

Following guided research into the needs of the current fauna species and investigation into how to cater for possible endangered species in the local area, students determined which species to focus on and how to enhance their habitat.

The students and teachers consider themselves very lucky to learn and work in such a beautiful environment. Nesting boxes which they built with *Bunnings Lismore* and the 3D printed boxes, purchased with a *Sustainable Schools Grant*, were put up by an arborist *Donovan* and *Emma* from *Kyogle Landcare*. *Uncle Marcus* worked with our students to finish



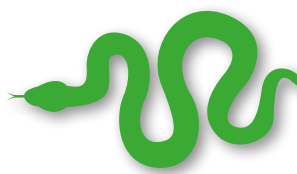
painting a koala sculpture, which will be placed in a special location to remind the community and motorists to be koala aware.

Pictured are some digital copies of some of the signs in the new school garden, designed by the students. Visitors also now have access to the Google slides, Google forms, a video and a slideshow including photos of the project, which are all accessible by using the QR codes on the signs.

Parents are invited to come in and complete the tour with their child. There is also a sheet to complete for a scavenger hunt, if families would like complete the tour through the garden in Term 1.

The students truly enjoyed showing the school community all they had learnt and created at a special assembly at the end of 2023, organised by the proud **Gabul Group Leader** for Semester 2, 2023; classroom teacher, **Iris Vos**.

Gabul (meaning carpet snake) is the name of the Year 3-6 Class at Barkers Vale PS.





The students created the following habitats: Bird and feathertail nesting boxes, frog hotel plus suitable native vegetation, native bee hives, butterfly/bird baths, several native garden areas, planting of gumtrees and holes in fences in order to connect koala corridors, placing of koala safety road signs.
Below: School's bird box full of bees. Photo: Iris at Barkers Vale



I like **gardening**
I like to weed, to help
the **beautiful plants**
and **flowers** grow. I like
to **help nature** and the
animals."

Student Year 2

BVPS bees

LIFE CYCLE OF A HONEY BEE

Adult Bee, Egg, Larva, Pupa

How have we enhanced the habitat for our bees?

To increase our bee population, we have split our native bee hive into two and bought a third one, after one of the split beehives was attacked by wild bees.

We have planted a variety of native flowering plants, making our school grounds a bee paradise.

How did we enhance the habitat for our bees?

We have planted a variety of native flowering plants, making our school grounds a bee paradise.

If you desire to have more bees humming in your garden here is a flower that will be perfect!

With flat, open flowers, daisies are the perfect shape for nectar and pollen collection - which is why both honeybees and native bees love them. They come in a range of species, including the native Cut Leaf Daisy and Federation Daisy.

Below are some native flowers we have planted in our garden to attract more bees.

Bees are important to the biodiversity of the community as our bees (both native and European) pollinate the plants in the environment, making the fruit germinate (make fruit) for the community animals to eat.

BY TALITHA LAYTON



FROGS

HOW DID WE ENHANCE THE HABITAT OF THE FROGS IN OUR SCHOOL GROUNDS?

We created a Frog Hotel

What a good frog hotel looks like:

- Provide shelter by installing PVC pipes.
- It should have varying depths of water to allow frogs to manoeuvre around the pond according to their needs for water, depth and temperature.
- It contains loose dirt and sand to support aquatic plants and invertebrates (food source for frogs)
- It is surrounded by plants wherein the frogs can hide.

ENDANGERED FROGS IN OUR AREA

Fleays barred frog
Peron's tree frog
Red eyed tree frog

List of frogs in our area

Green tree frog
Dainty tree frog
Wilcox's frog
Bleating tree frog
Australian rocket frog
Easton draft frog

Frog friendly plants

Lomandra
Flax Lillies
Grass like Sedges
Kangaroo Grass

LifeCycle of a Frog

FROG FOOD

Mosquito larva
Meal worm
Cockroach
Crickets

Fun educational game

WANTED

By Noah, Frankie & Zeb



ART IN THE SUN

Friends of the Lismore Rainforest Botanic Gardens Wednesday work group have been treated to a workshop on cyanotype printing run by volunteer graphic designer, **Annette Deal** of *Ginger Blue Graphics*, Lismore for the LRBG.

Annette hopes that the Friends will invite others to participate in future workshops.

Start thinking about the local native plants you'd like to print. Collect them at home, because we can't collect them at the Gardens of course.

If you are interested in botanic photography, stay tuned for more information this year as we hope to run some workshops about composition and making good use of your cameras.

Cyanotype printing is a fun and creative craft that makers of all ages will enjoy. Through the magic of science, you can create incredible artworks with this alternative photography technique, with plenty of opportunities to experiment and get creative.

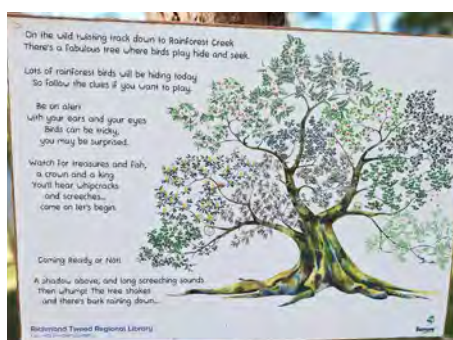
A cyanotype is a monochrome print or image made by placing objects on a pre-prepared light-sensitive surface.

The vast majority of cyanotype printing creates a negative photographic image on a dark blue surface - the light-sensitive surface

is exposed to the sun to 'develop', capturing the shadow of the objects placed on the surface, creating a stencil-style image. The very name 'cyanotype' is derived from the Ancient Greek words for 'dark blue' and 'mark/impression/type'.



L: Cyanoprint created by Annette
Above: Cyanoprint setup in the making



THE HIDE AND SEEK TREE OF RAINFOREST CREEK - STORY BOOK WALK

Families have been enjoying the beauty of a gentle stroll through the *Hoop Pine Forest* at the Gardens while reading the story-walk book *The Hide and Seek Tree of Rainforest Creek*. Written exclusively for the *Lismore Library* by local author **Lee Duncan** and illustrated by local artist **Laila Paige**, this walk tells the story of many of our favourite local birds of the rainforest.

The twelve illustrated panels are a great way for parents, guardians and carers to take a walk with the kids and learn in a natural setting. The Lismore Library installed the story walk as a series of pages (panels). It is a captivating story with clues in each panel. Continue up to the top of the forest to see the labyrinth, chimes and bell.

The Story Walk begins at the BBQ near the visitor's centre and is suitable for youngsters four years and older and adults alike. A pair of walking shoes, insect repellent and a bottle of water are recommended. Why not bring a picnic lunch, have a play in the *Cool Cubby* or head into the *Discovery Trail* in the rainforest or the *Sensory Garden*?

Which bird from *Rainforest Creek* is the best at hide and seek? You'll have to come for a walk to find out!



Centre: Three Story panels on the Story Book Walk,
Above: Storywalk author, Lee Duncan with FLRBG president, Tracey Whitby

GARDEN HABITAT HEROES

STINGLESS & SOLITARY BEES

SAT 23RD MARCH 9.30AM TO 12.30PM
LISMORE RAINFOREST BOTANIC GARDENS



UNVEILING GARDEN HABITAT HEROES WORKSHOP: A journey into creating a wildlife haven in your garden

In an endeavour to foster biodiversity and community engagement, the Garden Habitat Heroes workshop is set to bloom at the **Lismore Rainforest Botanic Gardens** on **Saturday, March 23rd**, from **9.30am to 12.30pm**.

This is the first of four *Garden Habitat Heroes workshops* to be held this year by **Richmond Landcare**, thanks to funding from the *Foundation for Rural & Regional Renewal Strengthening Rural Communities Program*.

This immersive workshop invites participants on an educational voyage to transform their yards into thriving habitats for native flora and fauna. From learning the secrets of habitat creation to crafting a native bee hotel for your garden, attendees will embark on a hands-on journey to amplify biodiversity in their own backyards, with a focus on how to encourage solitary and stingless bees to thrive.

The presenters will have books, including children's books, available for purchase. There will be *observation hives, sugar-bag honey tasting, hands-on displays* and lots of time to ask questions to deepen your knowledge of our stingless

and solitary bees, as well as habitat creation in general.

A guided stroll through the lush botanic gardens will round off the event, offering firsthand insights into the elements that constitute an ideal habitat. Participants will have the unique opportunity to witness biodiversity in action, igniting inspiration for their own garden endeavours.

Morning tea will be provided, offering participants a chance to mingle and exchange ideas in a relaxed atmosphere. However, with **limited spaces available, early bookings are essential** to secure a spot in this transformative workshop. Register here: <https://events.humanitix.com/garden-habitat-heroes-stingless-and-solitary-bees>

Open to individuals of all ages, this event welcomes families to partake in the adventure of habitat creation. For safety reasons, children are kindly requested to be accompanied by an adult throughout the workshop.

Join us at the **Garden Habitat Heroes** workshop for a morning of discovery, connection, and ecological stewardship.

Let's embark on a journey to cultivate thriving habitats, one garden at a time.

For further inquiries, please contact **Ivy Young** by email at: projects@richmondlandcare.org.



Richmond
Landcare
Inc.

Richmond Landcare Incorporated is a non-profit community-led Landcare network formed in 1998 to support Landcare in the Richmond River catchment. We provide support to new and established Landcare groups and our wider community through partnerships with local environmental organisations and councils in the Richmond Catchment. We facilitate best practice management of land and water across all landscapes.



The beautiful flower *Stenocarpus sinuatus*/Firewheel

NEWS FROM THE NURSERY



In December we remembered our *Nursery Botanist* and long-term *Friend of the Botanic Gardens*, Jan de Nardi, with a small group gathering in the Nursery for morning tea. It was clear from the memories and stories about Jan that she has not been forgotten and that she is held in high regard and affection and continues to be missed by those who knew her.

Seed bank

Propagation by seed has begun again in earnest, as more and more seeds become available. Each time we are given seeds, we can only use them if they are properly identified by their botanical name and with the date of collection, where found, and name of collector.

Then the research begins to check if it is a plant we want, if the seed is viable and for how long, and any specific requirements for germination. We turn to our reference books, and to people who hold a lot of knowledge and experience about these rainforest plants, particularly our Curator, **Peter Gould**, also **Florence Treverrow**, and **Damian Butler**.

We were pleased to receive a few fruits of the *Small-leaved Tamarind*, *Diploglottis campbellii*, sourced from the Tucki Creek area. These big, red fruits lie nestled in threes in seed pods. The red fruit which encloses the seed is in fact an aril which is an extension of the seed stalk growing over and enclosing the seed. The fruit is excellent bush tucker straight from the tree or used in jams, jellies, drinks and flavouring.

The fruit is large, juicy and shiny red and quite easy to see on the tree as well as fallen fruit on the ground, so the question is, why does it not seem to be taken by birds, animals or insects, and how does it disperse to other sites? Perhaps this explains why this is one of the reasons *Diploglottis campbellii* is an endangered species in the wild.



Top L: Remembering our long time friend and botanist, Jan de Nardi (R) with Pat Offord (L)
Top R: Chris in the Grasses Display Garden and above: Plants in new Sensory Garden are thriving

It is reputed to germinate easily from fresh seed, so we will see if we can raise a few.

There are many triggers that prompt germination of seeds, apart from all the well-known ones of moisture, warmth, freshness of seed etc. This is a source of continual learning in the Nursery, and is a case of the more you learn, the more there is to know. The seeds of some species of rainforest plants appear to be reluctant to germinate, but may do so if the mix

they are planted in is disturbed, by stirring it up a bit. I imagine this is in imitation of the disturbance to the leaf litter on the forest floor, such as would be done by brush turkeys, bandicoots and many other critters, as well as the long gone Cassowary that used to inhabit the Big Scrub.

We are growing plants in the Nursery in artificial circumstances, but continue to learn from nature and are excited to see just what will be successful.

Jenny Wilson

TREE PROFILE - Peter Gould



Acacia bakeri - Inflorescences and mature phyllodes

***Acacia bakeri* or Marblewood, is a medium to tall tree of subtropical lowland rainforests and wet sclerophyll forest.**

Alex Floyd records a tree in the *Black Scrub Nature Reserve* having reached a height of 40m and a diameter of 90cm, but most remaining trees are less than 15m in height. It is a long-lived climax rainforest tree and is unusual among *Acacias* in that its seeds do not require heat to germinate.

Distribution

The natural range of distribution is from Brunswick Heads, New South Wales to Maryborough, Queensland. It is found in both wet sclerophyll *Eucalyptus* forest and rainforest communities. Soils can be of volcanic, metamorphic or alluvial origins. In NSW it can be found in the Endangered Ecological Community "*Subtropical Rainforest on Alluvium*".

Bark

The bark is grey-brown in colour, often wrinkled and rough with small scales and vertical rows of darker pustules. It has reddish coloured, terete and glabrous branchlets.

Phyllodes

Like most *Acacias* it has phyllodes rather than true leaves. The ever-green phyllodes have an elliptic to broadly elliptic shape and are straight to slightly curved with a length of 5 to 10 cm and a width of 15 to 50 mm and have three to four prominent veins. New growth is distinctly reddish.

Flowers

The flowers usually appear in the spring as inflorescences that appear singly on the raceme axis. The spherical flower-heads have a diameter of 3 to 5 mm and contain 15 to 30 pale yellow to cream-coloured flowers.

Fruit

The firmly papery to thinly leathery seed pods that form after flowering are straight or curved and flat but can be constricted between the seeds. The pods are 5 to 6 cm in length and 10 to 16 mm wide containing longitudinally arranged seeds. The sub-shiny dark brown seeds are flattened and have an oblong to broadly elliptic shape and a length of 6 to 10 mm.

ACACIA BAKERI

Common Name: **MARBLEWOOD**
or **BAKER'S WATTLE**

Family: **FABACEAE** (Subfamily
MIMOSOIDIEAE)/**MIMOSACEAE**



Timber

Floyd describes the timber as "yellowish, hard and tough". It has been used for flooring, cabinetry and tool handles. Though slow growing, it is a suitable choice for mixed species rainforest cabinet timber plantings.

Conservation status

Acacia bakeri is currently listed as **Vulnerable** in New South Wales. The ecological community "*Subtropical Rainforest on Alluvium*" of which it was a part has been greatly impacted by clearing for agriculture in the 19th and 20th centuries.

Links: <https://plantnet.rbgsyd.nsw.gov.au/cgi-bin/NSWfl.pl?page=nswfl&lvl=sp&name=Acacia~bakeri>

<https://bie.ala.org.au/species/https://id.biodiversity.org.au/node/apni/2902312>

https://apps.lucidcentral.org/wattle/text/entities/acacia_bakeri.htm

References:

Floyd, A.G. 1990, *Australian Rainforests in New South Wales* (Vol 2), Surrey Beatty and Sons, Chipping Norton, NSW.

Harden, G., McDonald, B and Williams, J. 2006, *Rainforest trees and shrubs, a field guide to their identification*, Gwen Harden Publishing, Nambucca Heads.

A POCKET HISTORY

THE GARDENS LOCATION

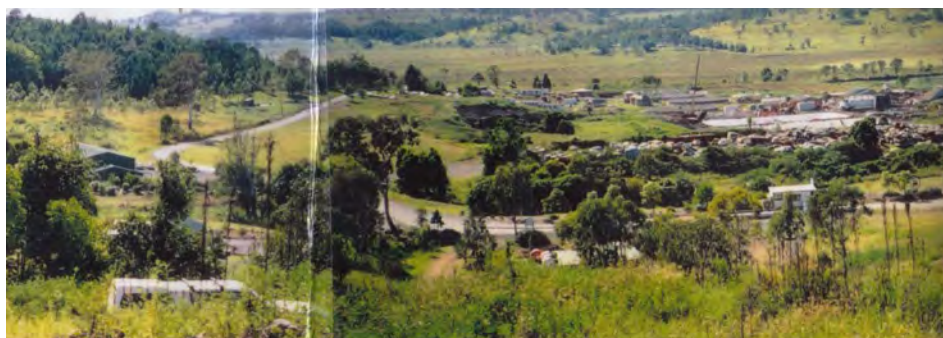
Although crown land was set aside in Lismore for a Botanic Gardens in the closing years of the 1800's, the Gardens were never begun.

Today the land is part of the Lismore Heights Bowling Club and the Primary School. During the 1980's **Laurie Chelsworth** suggested to the local branch of the *Australian Native Plant Society (ANPS)* that Lismore should once again establish a Botanic Gardens. Advice from the NSW Branch of the ANPS was to seek the backing of the **Lismore City Council (LCC)** and to find up to 300 acres of good land, with red soil if possible and a northern aspect. Many sites were found, one near Wollongbar and another near Rocky Creek, all too expensive.

Lismore City Council had meanwhile bought a farm along Wyrallah Road to ensure the longevity of the city rubbish tip, then closing in North Lismore. Land around the new waste facility was offered to the **Friends of the Lismore Rainforest Botanic Gardens (FLRBG)** committee to create a green buffer and regenerate the land, which was south facing and mostly previous landfill.

The hard work by volunteers began in the 1990's to clear weeds, landscape the rainforest "rooms", create paths and care for new plantings which began in 2002. LCC was generous enough to lay down our first footpaths, asphaltting the main centre path and providing some water. Since then, they have also provided a Visitor's Centre. A *Memorandum of Understanding* between the Friends LRBG and the council exists to support co-operation and a liaison committee meets regularly.

Initially, access to the Gardens was planned from Gundurimba Road, up to the summit of the newly acquired land. One could see the Nightcap Range to the north and the Clarence Valley to the south.



Top: Proposed site - lower and left hand side of photo. Middle: Original members of Friends cutting back Lantana. Bottom: First planting 2002

Below: Removing Madiera vine

Without support from the Federal Government, this was to prove too expensive so LCC again assisted the Friends by providing access from Wyrallah Road.

There are still three members of the original group of volunteers on the Friends committee which manages and maintains the Gardens.

With its objectives to grow and preserve local species of rainforest plants from within 200 kilometres of Lismore, the Gardens also provides educational guided walks and there is a self-guided walk brochure available.

Geoff Walker
Nursery Volunteer and
original Member FLRBG

