



# LISMORE RAINFOREST BOTANIC GARDENS

## MANAGEMENT PLAN

### 2025 – 2029



TABLE OF CONTENTS	PAGE
Background	3
Purpose	5
<i>Vision</i>	
<i>Themes &amp; objectives</i>	
Management Zones	5-6
Actions	6-15
Appendix 1: Location and Size-scale Map	16
Appendix 2: Management Zones Map	17
Appendix 3: Main Botanic Gardens Assets	18-34

## Background

The first murmurings of a botanic garden for Lismore began in 1988. Despite several attempts locally, grant money wasn't forthcoming. Eventually in 1994 a public meeting was held and a Steering Committee was established to progress the gardens, with the Friends of Lismore Rainforest Botanic Gardens officially forming a few years later. After years of painstaking research and negotiation, the Lismore Rainforest Botanic Gardens finally found a site at what was then Wyrallah Rd Landfill in 2000. See Appendix 1 for location and size-scale map.

Council began working with the Friends of Lismore Rainforest Botanic Gardens, with support from grants, to clear the weeds and rubbish, plant 6,000 plants and build pathways and other small infrastructure in establishment of the botanic gardens.

The Lismore Rainforest Botanic Gardens officially opened in 2013, and alongside it the first Memorandum of Understanding (MOU) and Management Plan. Both of these documents were relatively brief as the gardens and key buildings like the Environment Education Centre were still under development. Likewise, the liaison structures between Lismore City Council (LCC) and the Friends of Lismore Rainforest Botanic Gardens (FLRBG) were also still being worked out. While a second MOU was adopted for 2019 – 2024, the Management Plan was not updated.

The Botanic Gardens has grown a great deal in the last 10-15 years. The plants are well established, and much infrastructure has been added over the years - including a Visitor Centre, toilets, BBQ area, picnic tables, signage, decks, seating and bridges. It has become a destination for local, interstate and international visitors, and serves as a cultural and recreational venue, attracting theatre performances and displays of art works as well as guided walks.

Alongside this growth is a need to balance the future development of the botanic gardens with maintaining and upgrading what we already have.



*Figure 1: LRBG turn off sign at entrance, May 2014*





*Figure 2: The pond in the Sensory Garden being built with a weir to divide the deep end from the overflow area, Nov 2014*



*Figure 3: The same pond in the Sensory Garden, September 2024*



## Purpose

This Management Plan sets out in more detail how Council and the Friends of Lismore Rainforest Botanic Gardens will work together to better manage and develop the botanic gardens.

Guiding this new 5-year Management Plan is the Memorandum of Understanding (2025-2029), a Council-endorsed document which provides the vision, roles and responsibilities, liaison structure and dispute resolution process for this important partnership between LCC and the FLRBG.

### *Vision*

***The Lismore Rainforest Botanic Gardens is a place for informing the community about the value of Australian sub-tropical rainforest plants which naturally grow within a 200km radius of the City, their conservation, historical and cultural significance and their importance for a sustainable future.***

### **Themes & Objectives**

1. Research – To engender and facilitate scientific research into rainforest species
2. Education – To develop an understanding of sub-tropical rainforest ecosystems
3. Conservation – To contribute to the conservation of Australian sub-tropical rainforest species
4. Recreation – To provide opportunities for reflective appreciation of sub-tropical rainforests
5. Heritage – To illustrate the history of human interaction with sub-tropical rainforests

## Management Zones

The Lismore Rainforest Botanic Gardens has several different types of gardens and forests that represent the different themes and objectives of the gardens and can be split up into two management zones:

### **1. Rainforest Conservation Zone**

This zone is where the sub-tropical rainforest is most represented and where ecological restoration techniques will be predominantly used, such as controlling weeds but also encouraging and preserving habitat and the natural succession of plant communities. This zone includes the:

- Rainforest Walk
- Palm Gully & Nursery
- Wilson Park Species Garden
- Uncommon Plants Garden

### **2. Heritage & Recreation Zone**

This zone is where the gardens have been developed to educate on the heritage of the area and for recreation and require predominantly horticultural techniques, but such as controlling weeds but also pruning hedges, mowing and trimming to maintain the desired balance of plant species. This zone includes the:

- Hoop Pine Forest
- Useful Plants Garden
- Sensory Garden & Native Rice Garden
- Eucalypt Forest around the Visitor's Centre
- Water Conservation Garden
- Gardens around the Environment Education Centre

It is important to note that both zones must also be managed in a way that keeps the areas safe and navigable for visitors. A map of the Lismore Rainforest Botanic Gardens, and its management zones is provided in Appendix 2.

## **Actions**

Bringing this all together, the following 85 actions will be the focus for the next 5 years and are grouped in the following categories:

- 1. Site Management & Development**
- 2. Infrastructure**
- 3. Research, Heritage & Conservation**
- 4. Education & Promotion**
- 5. Administration**
  - a) Records & Database Management
  - b) WHS, Volunteering & Training
  - c) Liaison
  - d) Funding
  - e) Monitoring, Reporting & Evaluation



1. Site Management & Development				
No.	Action	Responsibility	Cost	Timeframe
1.1	Continue with Wednesday volunteer work days, focusing on the Heritage & Recreation Zones to maintain existing horticultural projects (eg Sensory Garden, Uncommon Plants Garden, Useful Plants Garden, Nursery, grass and ground cover displays in raised beds).	FLRBG Work Coordinator	In-kind	Ongoing
1.2	Continue with maintenance activities in all garden areas (weed removal & spraying, trimming, leaf blowing, mowing and whipper-snipping) around lawn areas, pathways and bridges to keep them safe and accessible for visitors	LCC Botanic Gardens Officer	In-kind	Ongoing
1.3	Mitigate weed encroachment from neighbouring property	LCC Botanic Gardens Officer	In-kind	Ongoing
1.4	Assess each garden area to develop a renewal program, with consideration to: <ul style="list-style-type: none"> <li>• Creating a line item for each in the budget</li> <li>• Plant species not yet represented, understorey plants, planting plants more in-line with microhabitat requirements, need for watering during extreme heat events etc</li> <li>• Plant species that the LRBG Nursery can propagate</li> <li>• Protect and beautify existing features and plants (eg rock faces, creeks and ponds, feature trees, Palm Gully, car wreck)</li> <li>• Drainage issues</li> <li>• Infrastructure needs (eg bridgework, paths)</li> <li>• Signage needs</li> </ul>	FLRBG Curator, FLRBG Work Coordinator, LCC Botanic Gardens Officer	In-kind & operational	End of 2025
1.5	Establish volunteer guardianship for each garden area to become familiar with and monitor, report on condition and issues, develop ideas and proposals for improvements	FLRBG Committee, FLRBG Curator	In-kind	End of 2025
1.6	Review existing plant labels, especially original in-bed ones from early planting days and update (eg with QR codes to plant database) or move if needed	FLRBG Committee	In-kind & operational	End of 2026
1.7	Investigate options for improving drainage in Eucalypt Forest around the Visitor's Centre between BBQ area and Cool Cubby	FLRBG Committee, FLRBG Work Coordinator, LCC Botanic Gardens Officer	In-kind	End of 2025
1.8	Establish vine displays using structures (arches, trellises and bowers) to support and display some of the 170 vines that occur within our region. Assess collection	FLRBG Curator,	Operational approx. \$600ea	End of 2026

	to identify which vines are not yet represented in the Gardens. Curator to chooses 10-12 vines for special displays, sites and structures spread around the Gardens. Gradual introduction.	FLRBG Work Coordinator		
1.9	Maintain a calendar list of seeding times for plants to propagate for planting and sales	FLRBG Nursery Manager FLRBG Curator	In-kind	End of 2025
1.10	Limit the growth of native plants that have self-seeded excessively (e.g. Red Kamala, Macaranga) if impacting on specimen plants	LCC Botanic Gardens Officer, FLRBG Curator	In-kind	Ongoing
1.11	Create environments for wildlife, including invertebrates and reptiles in all garden areas. Maintaining nesting sites and materials, creating habitat with simple constructions, drilling holes in fallen trees, keeping potential nesting materials	FLRBG Committee FLRBG Work Coordinator LCC Botanic Gardens Officer	In-kind & operational	Ongoing
1.12	Improved maintenance of existing informal / unsealed pathways	FLRBG Work Coordinator, LCC Botanic Gardens Officer	In-kind & operational	Ongoing
1.13	Investigate options for fire hazard reduction on site and neighbouring properties	FLRBG Committee, LCC WHS Advisor	In-kind & operational	End of 2026
1.14	Create and print a large aerial map of the LRBG	FLRBG Committee	Operational	Mid 2025
1.15	Investigate options for feral animal management (eg cats, dogs, foxes, Indian Mynah birds)	LCC	TBD	End of 2026
<b>2. Infrastructure</b>				
<i>Existing infrastructure includes: work shed, small tool shed, scientific area (fenced), with greenhouse for quarantining new plants, Nursery with greenhouse, hardening area and potting shed, Visitor's Centre with two toilets (accessible), ramps and stairs, office, gas BBQ shelter, outdoor education shelter, Cool Cubby, chimes and bell in Hoop Pine Forest, frog pond and viewing deck, Palm Gully viewing deck, solar clock, picnic shelter &amp; seating in the Sensory Garden, three sets of picnic tables and lots of wooden bench seating throughout gardens, four wooden bridges and a wind up Aboriginal story speaker, mobile tools such as motorised wheelbarrow.</i>				
No.	Action	Responsibility	Cost	Timeframe
2.1	Investigate feasibility and concept designs for an equipment & machine shed, workshop and carpark, to house motorised wheelbarrow and other equipment, workshop for woodwork, repairs etc	FLRBG Committee FLRBG Projects Officer LCC	TBD - Grant	End of 2026



2.2	Ongoing improvements to the Nursery, including: <ul style="list-style-type: none"> <li>Shade cloth to pull over hardening area when needed</li> <li>Proper bench for plants in hardening area</li> </ul>	FLRBG Committee	TBD - Grant	End of 2027
2.3	Investigate options to stabilise / upgrade the road to the Nursery	FLRBG Committee FLRBG Projects Officer LCC	TBD - Grant	End of 2027
2.4	Establish an automated irrigation system with large capacity tank/s, pumps and sprinklers to cover all areas	FLRBG Committee, FLRBG Projects Officer, LCC	\$250,000 Grant	End of 2027
2.5	Investigate feasibility and costing estimates for expanded power supply (eg for Wi-fi, air conditioning in Visitor's Centre, to power outdoor lighting, tools or a sound system)	FLRBG Committee, FLRBG Projects Officer, LCC	Grant	End of 2028
2.6	Participate in redesign & upgrade of entrance sign and gardens to make a grand entry as part of Lismore Recycling & Recovery Centre Masterplan	LCC, FLRBG Committee	In-kind	End of 2027
2.7	Investigate extending sealing of road (Anniversary Path) from entrance to beyond Carpark 1 for better accessibility & drainage, as well as within Carparks 1 and 2	FLRBG Committee, LCC	Grant	End of 2028
2.8	Maintain public signage visibility and access to LRBG entrance road, including wayfinding and speed limit signs	LCC Botanic Gardens Officer	In-kind	Ongoing
2.9	Update signage to Botanic Gardens on Bruxner Hwy roundabout and on Wyrallah Road as opportunities arise	LCC, State Government	In-kind / TBD?	As arises
2.10	Picnic table and bench seat repair and restoration as necessary; shift to pretend wood / recycled plastic options in rainforest areas to reduce rotting	FLRBG Committee, FLRBG Work Coordinator	Operational & Grant	Ongoing
2.11	Finalise boardwalk, paths and creek crossing in Rainforest Walk Room 6	FLRBG Committee	Operational / grant?	Mid 2024
2.12	Path work – restoration, repair, improved wheelchair access	FLRBG Committee	\$15,000 Grant	End of 2026
2.13	Finalise pond restoration and plantings in Sensory Garden	FLRBG Committee	Operational	Mid 2024
2.14	Music pergola / cubby in Sensory Garden	FLRBG Committee	\$22,000 grant	End of 2026
2.15	Power sprayer, 10-15m able to reach treetops for Myrtle Rust treatment	FLRBG Committee, LCC Botanic Gardens Officer	Grant	End of 2026
2.16	Electric runabout/s with trailer	FLRBG Committee	Grant	End of 2026

2.17	Investigate feasibility for a wheelchair accessible, raised walkway over central bitumen path through Rainforest Walk	FLRBG Committee	Grant	End of 2028
2.18	Restore BBQ plate in Eucalypt Forest area	FLRBG Committee, LCC	Operational	End of 2026
2.19	Investigate feasibility of a toilet at the Nursery	FLRBG Committee	Grant	End of 2027
<b>3. Research, Heritage &amp; Conservation</b>				
<i>Existing programs include plant rescue, display and propagation of Big Scrub species, Myrtle Rust garden, greenhouse and monitoring program, Uncommon Plants Garden, regeneration of former landfill sites study, supply of plant materials to bona fide science researchers and herbaria and conservation of threatened species projects, propagation of species to sell to the public, donate to schools and community projects</i>				
<b>No.</b>	<b>Action</b>	<b>Responsibility</b>	<b>Cost</b>	<b>Timeframe</b>
3.1	Continue to check regularly for symptoms of Myrtle Rust on plants as part of the Australian Network for Plant Conservation (ANPC) Myrtle Rust Project	LCC Botanic Gardens Officer, FLRBG Curator	In-kind	Ongoing
3.2	Engage in seed banking of species. Send to Mt Annan Botanic Gardens and cryo-preserving bodies. Consider contributing plant specimens to Mt Annan and SCU Herbariums.	FLRBG Curator	In-kind	Ongoing
3.3	Coordinate research and projects with NSW National Parks and the Saving our Species conservation program	FLRBG Curator	In-kind	Ongoing
3.4	In line with the Botanic Gardens Australia & New Zealand (BGANZ) to improve visitor numbers and experience, undertake research to discover who comes to the LRBG and why	FLRBG Committee	In-kind / grant?	End of 2026
3.5	Plant audit and database development - designed to include scientific information and research data, and information re uses, incl QR codes.	FLRBG Curator, LCC Botanic Gardens Officer	Operational \$3,500 establishment, \$600 pa	End of 2026
3.6	Continue and increase links with partnerships and associations: ANPC, Mount Annan Seedbank, SCU, Big Scrub, Big Scrub Conservancy (McLeans Ridges, Firewheel Nursery, Seedsavers Network, Regional Seedbank (Coffs Harbour, easy species for catchment management), Border Ranges-Richmond Valley Landcare Network	FLRBG Committee	In-kind	Ongoing
3.7	More informed profiles of indigenous history and culture relating to plants and rainforests	FLRBG Committee, Widjabul elders	Operational	Ongoing



3.8	History of European impact, white settlement, alternative lifestyles, tree changers, ecologists.	FLRBG Committee	In-kind	Ongoing
3.9	More talks, more indigenous involvement (eg Oliver Costello, cultural burns)	FLRBG Committee	In-kind	Ongoing
3.10	Undertake soil sampling. Improve soils in areas as needed. Source suitable soils. Biosoils.	FLRBG Curator, LCC Botanic Gardens Officer	In-kind	End of 2027
3.11	Special access to germinate our plants, Emma Stone, catchment Landcare	FLRBG Committee	In-kind	Ongoing
3.12	Student projects: mapping & tourism (data)	FLRBG Committee, SCU	In-kind	Ongoing
<b>4. Education &amp; Promotion</b>				
<i>Existing education and promotional programs include regular guided walks, workshops for guides, open days, the Endeavour Project and plant wheels, special presentations (incl. bee and butterfly workshops, myrtle rust), website including extensive plant profile list, newsletter, signage, stalls at community events, talks at schools and to community groups, hosting events such Story Time with Lismore Library and play productions. Passive education &amp; promotion through the gardens being open for private walks and picnics.</i>				
No.	Action	Responsibility	Cost	Timeframe
4.1	Review and update information & photos in brochures: <ul style="list-style-type: none"> <li>Lismore Rainforest Botanic Gardens: A Beautiful Place to Visit</li> <li>Lismore Rainforest Botanic Gardens: Self-guided walk</li> <li>Hoop Pine Forest Walk</li> </ul>	FLRBG Committee	Operational	End of 2025
4.2	Look for opportunities to incorporate the LRBG into other Council programs and projects, such as: <ul style="list-style-type: none"> <li><i>Feel Blue, Touch Green</i> exploring walks and parks in Lismore LGA for mental health</li> <li><i>Rail Trail</i> and other tourism / economic development initiatives</li> </ul>	FLRBG Committee FLRBG Publicity, LCC	In-kind	Ongoing
4.3	Promotion through magazines, web sites and TV programs as available	FLRBG Publicity	In-kind / operational	Ongoing
4.4	Continue to share promotional material about the LRBG and its events through local print and social media	LCC media team FLRBG Publicity	In-kind / operational	Ongoing
4.5	Run Botanic Gardens Open Day annually in May	FLRBG Committee	In-kind / operational	Ongoing

4.6	Host other events and exhibitions at the LRBG where practical	FLRBG Committee, LCC	In-kind / operational	Ongoing
4.7	Distribute FLRBG newsletter twice a year	FLRBG Committee	In-kind / operational	Ongoing
4.8	Nursery – ongoing development of advice and starter kits for schools and households. Nursery workshop for home gardeners, especially tubs, courtyards etc Coloured brochures and plant guides – continue production, review	FLRBG Nursery Manager FLRBG Committee FLRBG Guiding Coordinator	Operational	Ongoing
4.9	University and TAFE college students working on projects in LRBG for their coursework	FLRBG Committee	In-kind	On request
4.10	Targeting retirees (for Wednesdays work days and to be guides) and schoolkids (during school holidays) as volunteers and visitors	FLRBG Committee	In-kind	Ongoing
4.11	Improve information access for visitors, including refreshing existing and developing new material for: <ul style="list-style-type: none"> <li>• Informative and/or interpretive signs</li> <li>• Brochures / walking maps with photos</li> <li>• Updating FLRBG website</li> </ul>	FLRBG Committee FLRBG Publicity FLRBG IT person	In-kind / operational	Ongoing
4.12	Develop rainforest vine, geomorphology and timber displays. Permanent display in the Visitor's Centre	FLRBG Work Coordinator FLRBG Curator FLRBG Guides	Operational or Grant	Ongoing
4.13	Indigenous use of plants, eg fibre workshops/classes. Also early settlers' usage of plants. Develop further	FLRBG Education Team with Widjabul Elders	Operational or Grant	Ongoing
<b>5. Administration</b>				
<b>No.</b>	<b>Action</b>	<b>Responsibility</b>	<b>Cost</b>	<b>Timeframe</b>
a) <b>Records &amp; database management</b>				
5.1	Develop teaching program and plans, continue to document guided walks scripts, collect on file	FLRBG Education Team	In-kind / operational	Ongoing
5.2	Maintain linkages with Rivers Academy of STEM Excellence (RASE) and Northern Rivers Group Environmental Educators (NRGEE)	FLRBG Education Officer	In-kind / operational	Ongoing



5.3	Extend and improve system to record volunteer hours, including online place to document and include all the non-site work (administration hours, guiding, educational visits, grants, budgeting, newsletters, meetings with other BGs, conferences, design of signs/merchandise, participation in community planting, expos etc)	FLRBG Committee and LCC	In-kind	Ongoing
5.4	Maintain records on all our subscriptions and memberships of organisations (BGCI, IAUS/etc) with annual costs. Review each year to assess worth of expenditure and publications	FLRBG Secretary/Treasurer	Operational - \$1000 pa	Ongoing
5.5	Develop useful filing system for support materials for LRBG activities and for archives	FLRBG Office Team	In-kind	Ongoing
5.6	Collect archival documents and photos - file, digitise and document. Approach members to collect documents and photos. Do social history interviews with a few long-term members, funds for transcriptions.	FLRBG Office Team FLRBG Committee	In-kind	Ongoing
5.7	Ensure online resources and archives are accessible and secure with up-to-date backups	FLRBG Office Team FLRBG Committee	In-kind	Ongoing
5.8	Build useful book collections in Office and in Nursery (new bookshelves)	FLRBG Office Team FLRBG Committee	In-kind	Ongoing
5.9	Build a list and links for recommended online and book resources for the LRBG website	IT person FLRBG Committee	In-kind / operational	Ongoing
5.10	Process for offers of donations of goods, including second hand – acceptance by suitable authority/committee, including donation offers from Council. Whole Committee decision. Right to say no.	FLRBG Office Team FLRBG Committee	In-kind	Ongoing
5.11	Create plant database – include fauna and fungi. Photographs, plant profiles, GPS location, internal management data. Incl Bundjalung names where available	FLRBG Curator FLRBG Committee	In-kind	Ongoing
5.12	Audit plant collection for accuracy of database	FLRBG Curator LCC Botanic Gardens Officer	In-kind	Ongoing
5.13	Explore insurance for plants in collection against natural disasters (as has been done at Mt Tomah)	FLRBG Committee	In-kind / operational	End of 2026

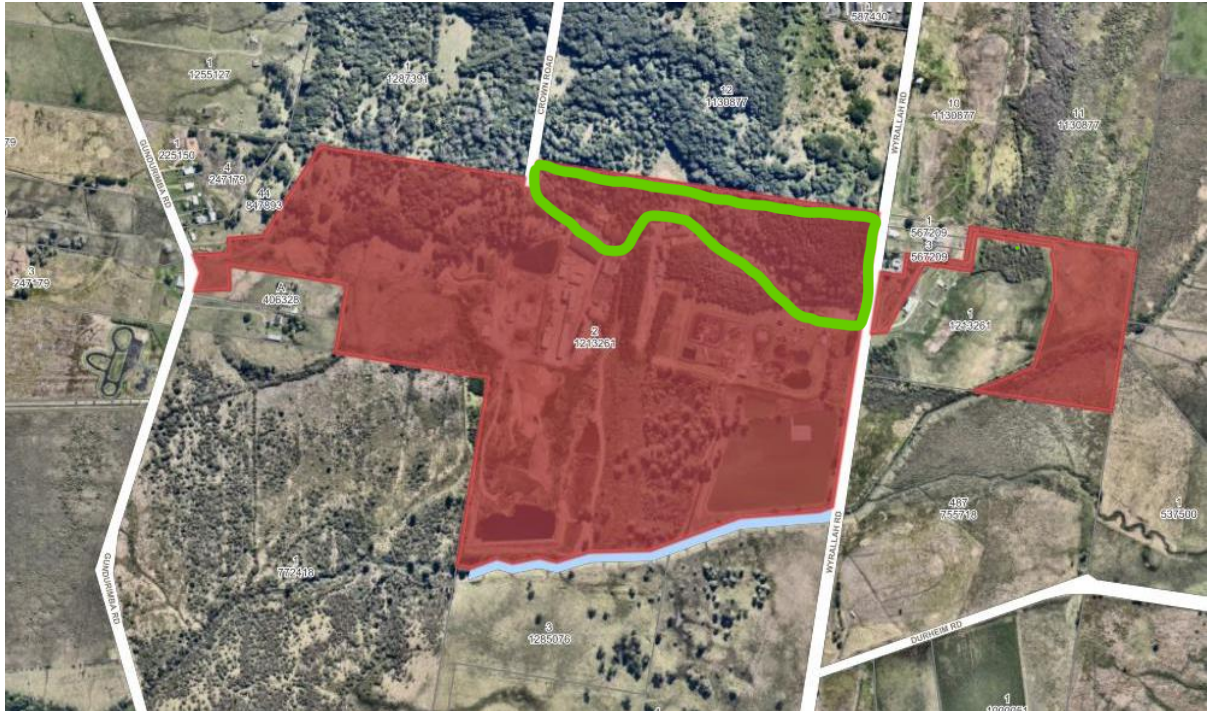
<b>a) WH&amp;S, Training &amp; Volunteering</b>				
5.14	Identify and report WHS issues for volunteers and visitors	LCC WHS Advisor LCC Botanic Gardens Officer	In-kind	Ongoing
5.15	Recruitment and training of more workday volunteers, volunteers for other areas (IT, publications, publicity, accounts, funding submissions etc), guides, committee members, fund raisers. Assess and develop ways to help volunteers contribute to the LRBG, provide training and resources. Contact employment services re work for the dole and post-60 volunteering, provide brochures	FLRBG Committee	In-kind	Ongoing
5.16	Encourage volunteer attendance at courses and conferences, visits to other Botanic Gardens, rainforests and nurseries.	All FLRBG volunteers	In-kind / operational	Ongoing
5.17	Maintain a register of volunteer training and identify any training needs / refreshers needed (eg First Aid, training in pesticide use ChemCert AQF3, use of chainsaws or other power tools)	FLRBG Committee, LCC WHS Advisor	In-kind	Ongoing
5.18	Workshops and training courses for volunteers and the public, including: <ul style="list-style-type: none"> <li>Seed and cutting germination and raising</li> <li>Pruning and tree care</li> <li>How to use Nicholson's et al Interactive rainforest key V.2</li> <li>Beginners botany (eg mycology and entomology)</li> <li>The effects of pesticides and herbicides</li> </ul>	FLRBG Guiding Coordinator Trainers	Operational – \$30 ID Key purchase x 2	Ongoing
5.19	Assist volunteers with plant identification –weed removal/treatment options, images of juvenile natives to keep or give to Nursery to grow on, look into procuring a microscope	LCC Botanic Gardens Officer, FLRBG Curator	In-kind & operational	Ongoing
<b>b) Liaison</b>				
5.20	Commit to regular Liaison Meetings with relevant stakeholders, at least 4 per year	Liaison Group	In-kind	
5.21	Inform and seek support of LCC for grant applications for infrastructure at the Botanic Gardens.	FLRBG Committee FLRBG Projects Officer		
<b>c) Funding</b>				
5.22	Continue with existing avenues for raising money, including calendars and card productions, plant sales, guided walks, specialist courses, funding submissions to donor bodies, LCC annual contribution, private donor support	FLRBG Publicity	In-kind	Ongoing

5.23	Increase annual contribution in line with CPI as per MOU	LCC, FLRBG Committee	In-kind	Annually
5.24	Establish a sub-committee of the FLRBG Management Committee, to raise public funds and advise the Management Committee on its expenditure priorities.	FLRBG Committee	In-kind	Ongoing
d) <b>Monitoring, Reporting &amp; Evaluation</b>				
5.25	Review Management Plan and track and report progress on actions alongside MOU to ensure a continued relationship and mutual support		In-kind	Annually
5.26	Prepare new 5-year MOU and Management Plan	LCC, FLRBG Committee	In-kind	Start of 2029
5.27	Provide Annual Report to LCC, including balance sheets and expenditure	FLRBG Committee	In-kind	Annually



## Appendix 1: Location & size-scale map

a) Lismore Rainforest Botanic Gardens is part of the one parcel of operational land owned by Lismore City Council (Lot 2 DP 1213261) at 313 Wyrallah Rd, Monaltrie, which includes the Lismore Recycling & Recovery Centre and East Lismore Sewage Treatment Plant. The whole land parcel is 797,336m<sup>2</sup> (79 Ha) and the Botanic Gardens occupies approximately 80,000m<sup>2</sup> (8 Ha) of that area.



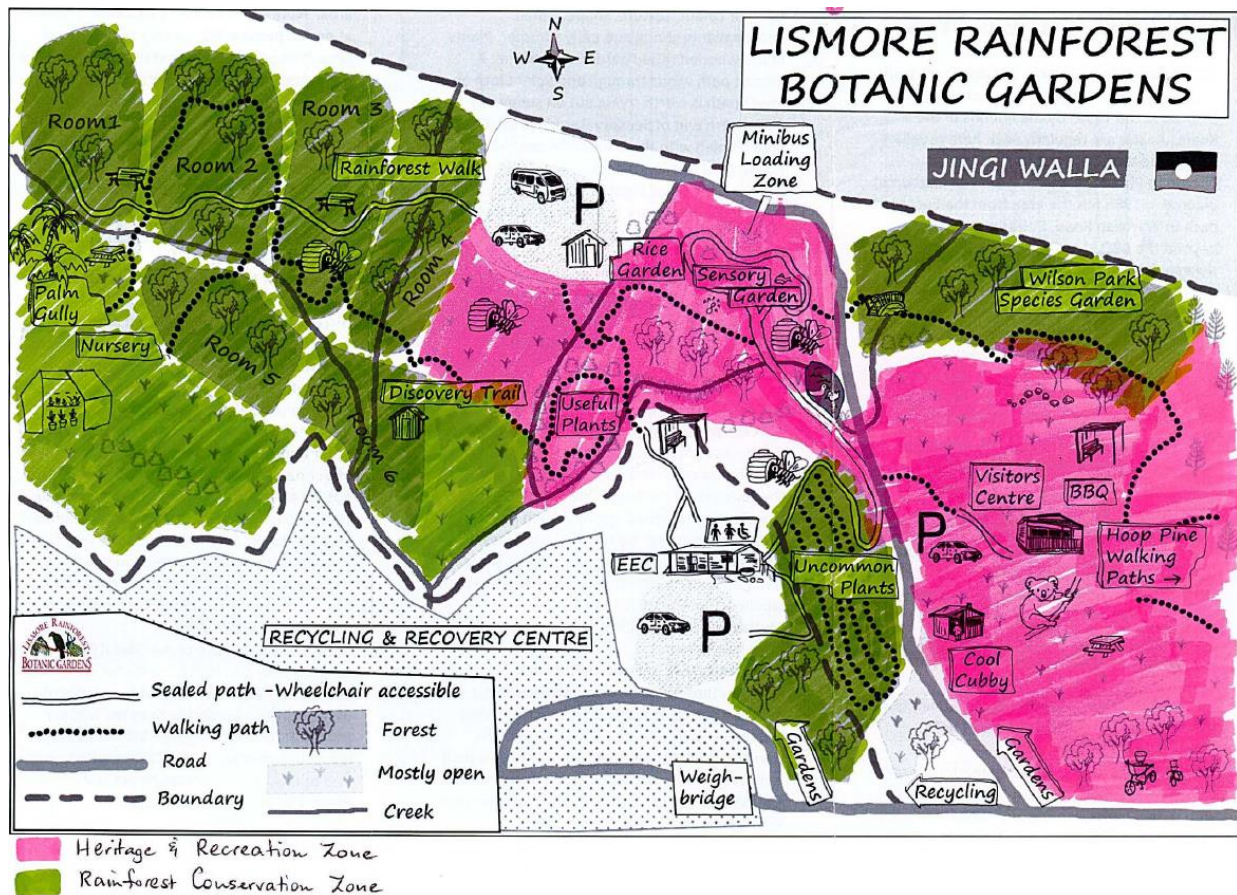
b) A closer view of the Botanic Gardens area bordered in green situated to the north of Lismore Recycling & Recovery Centre





## Appendix 2: Management Zones of Lismore Rainforest Botanic Gardens

The gardens in the Rainforest Conservation Zone (green) and in the Heritage & Recreation Zone (pink). Image coloured from the FLRBG Self-guided Walk brochure.





### Appendix 3: Lismore Rainforest Botanic Gardens – Main Assets

#### Buildings and structures



Visitors Centre and Toilets



Nursery



Work Shed in Carpark 2



Tool Shed – on the edge of Useful Plants Garden and Rainforest Walk Room 6



Environment Education Centre (EEC)



Anniversary Path to Carpark 2 - concrete section





Bitumen path to Sensory Garden



Bitumen path through Rainforest Walk to Nursery

### Informational and wayfinding signage



Main entrance sign on Wyrallah Rd



Turn off sign on waste facility main road



Turn off sign at Anniversary Path entrance



'You Are Here' map sign 1 on concrete ramp path to EEC





'You Are Here' map sign 2 in Carpark 2 near entrance to Rainforest Walk



'You Are Here' map sign 3 in Carpark 2 near Visitor's Centre with Keep It Messy Mate sign



EEC and LRBG large wayfinding sign 1 on concrete ramp path near EEC



EEC and LRBG large wayfinding sign 2 at entrance to Useful Plants Garden



EEC and LRBG large wayfinding sign 3 - off main road entrance to Uncommon Plants Garden



Small wayfinding sign 1 - outside EEC





Small wayfinding sign 2 and bridge - Useful Plants Garden



Small wayfinding sign 3 - Useful Plants Garden points back towards Sensory Garden



Small wayfinding sign 4 along main road near red bridge



Small wayfinding sign 5 along main road back and bitumen path to EEC



Directional signage on main road



Welcome sign at end of concrete path from EEC





Informational and directional parking sign down Anniversary Path



LRBG Informational signage (temporary) - Brown Snakes seen in this area



LRBG Informational Signage (temporary) - Living Shelter under construction



LRBG Informational Signage (temporary) - no picking



LRBG Informational Signage (temporary) – butterflies & habitat



Emergency Assembly Area sign in Carpark 2



## Useful Plants Garden



Useful Plants Garden - Upper Paths sign



Useful Plants Garden - Lower Paths sign



Useful Plants Garden - Aboriginal Listen and Learn wind up speaker



Useful Plants Garden bench seats 1 & 2



Useful Plants Garden - wooden bridge towards Carpark 2



## Sensory Garden, Rice Garden & Encounters Walk



Rice Garden - Wild rice sign



Sensory Garden - Andrew and Jeni Binns sign



Sensory Garden – bench seats 1 & 2 (one with dedication plaque)



Sensory Garden – bench seat 3



LRBG Sensory Garden – bench seat 4



Sensory Garden - bubbler and tap





Sensory Garden – wood and leadlight sculpture



Sensory Garden – wood and leadlight sculpture 2



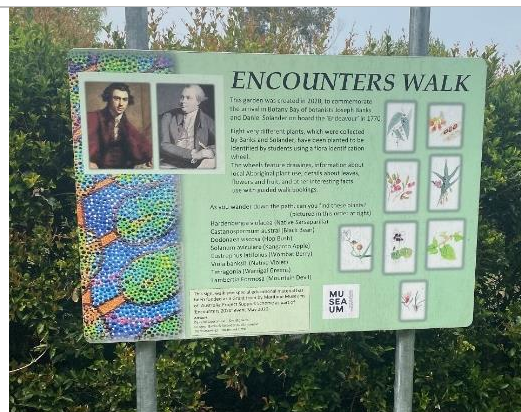
Sensory Garden - mosaic paved pathway



Sensory Garden – bench seat 5



Sensory Garden – bench seat 6



Sensory Garden - Encounters Walk sign





Sensory Garden - solar clock



Sensory Garden - crushed gravel steps



Sensory Garden – pond & frog habitat viewing deck



Sensory Garden – pond



Sensory Garden – bench seats 7 & 8 near main road



## Wilsons Park Species Garden



Wilsons Park Species Garden sign



Wilsons Park Species Garden - red bridge off main road into garden



Wilsons Park Species Garden - red bridge off main road into garden



Wilsons Park Species Garden - gravel path through garden

## Eucalypt Forest and Visitor's Centre area



Eucalypt Forest - view of bench seats 1 & 2, Cool Cubby and picnic shelter from Carpark 1



Eucalypt Forest - BBQ shelter





Eucalypt Forest - BBQ close up



Eucalypt Forest - sheltered picnic area



Eucalypt Forest - Cool Cubby



Eucalypt Forest - Concrete picnic table & seats



Eucalypt Forest - Concrete picnic table & seats 2



## Hoop Pine Forest



Hoop Pine Forest - entrance with signs



Hoop Pine Forest - bench seat 1



Hoop Pine Forest - bench seat 2



Hoop Pine Forest - bench seat 3





Hoop Pine Forest – chimes & bench seat 4



Hoop Pine Forest - bench seats 5 & 6 at summit



Hoop Pine Forest - stone labyrinth at summit



Hoop Pine Forest – bell at summit

### Rainforest Walk



Rainforest Walk entrance sign



Rainforest Walk - Room 1 Dry Rainforest sign





Rainforest Walk – Room 1 Dry Rainforest bridge



Rainforest Walk - Room 1 Dry Rainforest bench seat



Rainforest Walk - Room 2 Subtropical Rainforest sign



Rainforest Walk - Room 2 Subtropical Rainforest bench seat



Rainforest Walk - Room 3 Myrtaceae sign



Rainforest Walk - Room 4 Dry Rainforest sign





Rainforest Walk - Room 4 Dry Rainforest -  
Grandis Crossing



Rainforest Walk - Room 5 Subtropical  
Rainforest mix sign



Rainforest Walk - Room 5 Subtropical Rainforest  
mix - bench seat



Rainforest Walk - Room 5 Subtropical  
Rainforest mix - creek crossing and railing to  
Nursery



Rainforest Walk - Room 5 picnic table and  
bench seats



Rainforest Walk - Room 5 Discovery Trail sign





Rainforest Walk - Room 5 fern gully picnic area



Rainforest Walk - Room 5 fern gully picnic table



Rainforest Walk - Room 5 Discovery Trail bench seat



Rainforest Walk - Room 5 Discovery Trail raised walkway bridge



Rainforest Walk - Room 6 Subtropical Rainforest mix sign



Rainforest Walk - Room 6 Grandis Creek Picnic Area





Rainforest Walk - Room 6 Garth Kindred Bridge  
over Grandis Creek

### Palm Gully



Palm Gully - bench seats 1 & 2



Palm Gully - sign and railings to viewing  
platform



Palm Gully - raised walkway viewing deck